

# THE ORCHID CLUB OF SOUTH AUSTRALIA INC.



Next Meeting  
Enfield Community Centre,  
540 Regency Road, Enfield  
6<sup>th</sup> October 8:00pm

## 2011 PROGRAM

<u>DATE</u>	<u>PRESENTER</u>	<u>TOPIC</u>
September	No Meeting	Royal Show
6 <sup>th</sup> October	Kevin Trevan	Zygopetalums
3 <sup>rd</sup> November	Kevin Hipkins	TBA
1 <sup>st</sup> December	Kevin Cattermole	Summerizing your Orchids

## DAY GROUP MEETINGS

Enfield Community Centre,  
540 Regency Road, Enfield  
(Bus Stop 119 Bus No 100 Circle Line)  
9<sup>th</sup> September 2:00pm to 4:00pm

<u>DATE</u>	<u>PRESENTER</u>	<u>TOPIC</u>
9 <sup>th</sup> September	David Harmer	Presentations & DVD's
14 <sup>th</sup> October	Elmore & Pam Leske	Cymbidiums.
11 <sup>th</sup> November	Roger Herraman	Native Cymbidiums
9 <sup>th</sup> December	Christmas Break Up Day	

## DIARY DATES FOR THE 2011 SEASON

2<sup>nd</sup> - 10<sup>th</sup> September Spring Show - Adelaide Showground  
5<sup>th</sup> November "Socializing with Sarcs" - Enfield Community Centre

A Member of the Australian Orchid Council Inc.

Published by The Orchid Club of South Australia Inc.

# SOUTH AUSTRALIAN ORCHID BULLETIN



September 2011

Web Site: [www.orchidclubofsouthaustraliainc.com](http://www.orchidclubofsouthaustraliainc.com)

Print Post Approved PP500080/0019



*Paphiopedilum* Tomi Semple 'Su - Me'

Registrar's Choice Grown by Suzanne Saunders

## SOUTH AUSTRALIAN ORCHID CLUBS

### ORCHID CLUB OF SOUTH AUSTRALIA - LIFE MEMBERS

1966	Neil Christoph†	1992	Bill White†
1970	H C England†	1992	Roy Hargreaves†
1974	Bernie Hansen†	1994	Reg Shooter
1975	Rex Thompson†	1994	Enid Brooking
1975	Syd Monkhouse	1996	Ted Chance
1976	John Lewis	1996	Marjorie Chance
1978	Mick Chenoweth†	1997	Eric Furness†
1979	Merv Strout†	1998	Cyril Clifford†
1980	Colin Jennings	1999	Don Nesbitt
1984	Merv Donhardt†	2001	Sally White
1985	Russell Schultz†	2002	Richard Fishlock
1985	Harry Lambert	2003	Bob Collins†
1985	John Harris	2007	Reg Faulkner
1985	Kath Harris†	2007	Pat Faulkner
1985	Barbara Clayton	2007	Peter Hills
1985	Lorraine Cottle	2007	Coralie Hills
1985	Myrnie Jennings	2007	Judy Penny
1986	Nick Packard†	2008	David Harmer
1987	Margaret Hewitt	2008	Pat Harmer
1987	Shirley Monkhouse	2009	Russell Job
1988	Don Gallagher	2009	Edda Viskic
1988	Kel Staples	2010	Gordon Hewitt†
1990	Allan Sullivan†		

† Denotes deceased member

### NOTES FOR OCTOBER

Next OCSA Judges Meeting: Monday 14<sup>th</sup> November at Enfield Community Centre,  
Topic: SA Orchid of the Year

Next Regional Judges Panel Meeting: Monday October 10<sup>th</sup> at Pulteney Grammar School.

### JUDGES ROSTER FOR OCTOBER 2011

<b>OPEN:</b>	N. Oliver (L)	G. Zerbe	P. Rankin	J. Argent (R)
<b>FIRST:</b>	S. Howard (L)	R. Shooter	A. Davies	S. Saunders (R)
<b>SECOND:</b>	J. Lampard	R. Rankin	R. Yates	G. Shooter (R)
<b>WHAT CAUGHT THE JUDGE'S EYE:</b>		<b>Open</b>	K. Minne	
		<b>First</b>	I. Davies	
		<b>Second</b>	P. Harmer	
<b>RESERVES:</b>		W. Lodge	R. Riggs	
<b>COMPUTER:</b>		B. Gay	S. Zerbe	
<b>HOSTS:</b>		R. Job	Chris Moncrieff	

#### **Cymbidium Orchid Club of S.A.**

Secretary: Liz Thomas  
Ph. 0412 391 989  
17 Eucalypt Circuit Blakeview SA 5114

#### **Gawler Districts Orchid Club**

Secretary: Murray Page  
Ph. (08) 8250 0689  
PO Box 32, Gawler, SA 5118

#### **Millicent Orchid Society**

Secretary: Robert Wood  
Ph. (08) 8723 2953  
c/o 37 Wehl Street North Mount Gambier  
Sth. Aust. 5290

#### **Mount Gambier Orchid Society**

Secretary: Thea Shaughnessy  
Ph. (08) 8725 9051  
PO Box 2455 Mount Gambier SA 5290

#### **Murray Bridge & Districts Orchid Club**

Secretary: Wendy Schmerl  
Mob. 0435 909 246  
PO Box 652, Murray Bridge, SA 5253

#### **Murray Darling Orchid Club**

Secretary: Eileen Morrison  
Ph. (03) 5027 4785  
2 River View Drive, Dareton, NSW 2717

#### **Native Orchid Society of S.A.**

Secretary: Robert Lawrence  
Ph. (08) 8294 8014  
PO Box 565, Unley, SA 5061

#### **Northern & Eastern Districts Orchid Society**

Secretary: Tony Fawcett  
Ph. (08) 8331 8956  
103 Beulah Rd, Norwood, SA 5067

#### **Port Augusta Orchid Club**

Secretary: Coral Ellis  
Ph. (08) 8643 6016  
PO Box 1752  
Port. Augusta SA 5700

#### **Port Lincoln Orchid Club**

Secretary: Shirley Rawlins  
Ph. (08) 8682 8237  
PO Box 1335 Port Lincoln SA 5606

#### **Port Pirie & Districts Orchid Club**

Secretary: Rob Worden  
Ph. (08) 8633 0894  
42 Ferme Street, Port Pirie  
Sth. Aust. 5540

#### **Riverland Orchid Society**

Secretary: Yvonne Ahrens  
Ph. (08) 8588 2722  
PO Box 746, Berri, SA 5343

#### **South Australian Orchidaceous Society**

Secretary: Trevor Jacob  
Ph. (08) 8346 6155  
PO Box 161, Brooklyn Park SA 5032

#### **South Coast Orchid Club of S.A.**

Secretary: Lucy Spear  
Ph. (08) 8381 4420  
PO Box 314, Oaklands Park, SA 5046

#### **Sunraysia Orchid Club**

Secretary: Dianne Cavanagh  
Ph. (03) 5023 5411  
PO Box 1818 Mildura Vic. 3502

#### **Whyalla Orchid Club**

Secretary: Bill Davidson  
Ph. (08) 8645 4198  
PO Box 566, Whyalla, SA 5600

**To Doctors! May they never get too friendly with undertakers?**

## Miles Harper – Club Solicitor

Can help your legal transactions

Wills and Estates are a speciality

First interview FREE for OCSA members

2<sup>nd</sup> Floor, 333 King William Street. Adelaide SA 5000

Ph: 8273 8660 Fax 8273 8677 Email: miles@harperdavison.com.au

## Garden City Plastics

An OCSA Preferred Supplier of your Potting & Horticultural Needs

Available from the OCSA Trading Table

## Adelaide Copy

Your OCSA Preferred Printer for Best Quality and Consistency

Ph: 8362 0050

Email: [mark@adelaidecopy.com.au](mailto:mark@adelaidecopy.com.au)

## Simply Ice

Your OCSA Preferred Supplier of Food Grade Ice for your function

Available at a Foodland Store or Selected Service Stations near you



The Experts' Choice.

Supporters of OCSA

& the Festival of Flowers

Manufacturers of all your fertilising needs for garden, potted plants & orchids

Website: [www.neutrog.com.au](http://www.neutrog.com.au)

## The Official Bulletin of The Orchid Club of S.A. Inc.

Patron: Mrs. Liz Scarce

### Management Committee

#### President

Edda Viskic  
PO Box 10  
Forest Range SA 5139  
Ph (08) 8389 8402

[mazu5139@bigpond.net.au](mailto:mazu5139@bigpond.net.au)

#### Secretary

GPO Box 730  
Adelaide S.A. 5001

#### Treasurer

Graham Hein  
566 Milne Road  
Banksia Park SA 5091  
Ph (08) 8396 1989

[graham.hein@bigpond.com](mailto:graham.hein@bigpond.com)

#### Senior Vice President

Russell Job (VP)  
Ph (08) 8389 8402

#### Show Marshal

Trevor Camac  
Ph (08) 8396 4414

#### Junior Vice President

Graham Hein (VP)  
Ph (08) 8396 1989

#### Day Group Coordinator

Pat Harmer  
Ph (08) 8250 0718

#### Registrar of Judges

Ron Yates  
Ph (08) 8264 6973

#### Editor

David Harmer  
Ph (08) 8250 0718

#### Social Events Coordinator

Edda Viskic Ph 8389 8402

[mazu5139@bigpond.net.au](mailto:mazu5139@bigpond.net.au)

#### Past President

Murray Baulderstone Ph 8276 3771

[ian.gunn8@bigpond.com](mailto:ian.gunn8@bigpond.com)

#### Committee

Dave Harmer Ph 8250 0718

Trevor Camac Ph 8396 4414

Pat Harmer Ph 8250 0718

J. Geier Ph 8288 8328

Allan Stewart Ph 8248 2775

John Drummond Ph 8248 1739

Editors Contact for Copy: [deepee@smatchat.net.au](mailto:deepee@smatchat.net.au) or 8250 0718

The opinions expressed by authors do not necessarily reflect the views of the Editor or the Committee of The Orchid Club of South Australia Inc.

Registrar's Choice 'FLOWER of the MONTH' digital image by David Harmer.

### Contents

Life Members	2	What's in a Name	13
Notes & Judging Roster	2	Dockrillia cucumerina	13
News from the President	4	S.A. Orchid History	14
Thoughts from the Editor	5	What is a Varietal name	14
Registrars Choice for August	5	Schomburgkia tibicinis	15
What Caught the Judge's Eye	6	August Monthly Results	16
Day Group Speaker for September	7	Winter Natives at Mylor	19
August Day Group Report	7	Coming Events	20
Singapore Orchid Conference	7	Winter Show – Treasurer's Perspective	20
Cultural Observations	8	Classified Advertisements	21
How the Best were Grown	8	SA Orchid Club Contact Details	23
Spring Show Details	9	Coming Events Program	24
Participating in Shows	12		

**COPYRIGHT:** All contributions to this Bulletin which have acknowledged authors are automatically covered by copyright. We believe that most authors would be willing to allow free use of articles if written approval is sought from them through the Secretary of the club.

## NEWS FROM THE PRESIDENT



Finger crossing time is over and the Spring Show Time is here for 2011. Leaving the cold of Winter is encouraging the blooms to open as the sunny days increase. Thanks to all Members and Clubs planning to enter the Royal Agricultural and Horticultural Show Displays to be in by Wednesday 31st August. Judging on the 1st September will proclaim Champions with growers to be celebrated from 6.30 p.m. on

Thursday evening at the Grand Opening of our Spring Show. Members are invited to be seated by 6.45 pm when our Patron, Mrs. Liz Scarce will be arriving to open the show and present the sashes at 7.15pm at the Wayville showground's, Mezzanine Room, Goyder Pavilion. We are very honoured to have our Patron attending and taking time to share our love of orchids. Please come and meet and greet her and make her feel welcome. Smart casual dress is suggested and members are requested to bring a plate to share for supper. The food can be put on the tables in the mezzanine floor. Congratulations to all members for participating and being part of such a popular annual event that brings our state's city, regional and country folk together and mixes in new ideas from interstate and overseas. Thanks to our Sponsors for making it all possible. Bunning's have been added to our list of Sponsors and they have encouraged our club to be part of their Garden Clubs' Section at their Woodville store. Demonstrations and Workshops have been booked and a sausage sizzle provided on Sunday 4th September. If you can assist with flowering plants for a small display stand or help liaison with the public, or cooking, please see Dave Harmer or Trevor Camac. We will be launching our newly completed DVD's of the Workshop held recently. There will be available for sale at \$10 and viewing, during the day. Other dates have been set for the 14th and 21st of September where our participation is requested at Garden Club Workshops at the Findon Community Centre from 1p.m. to 3p.m. Contact any of the committee if you would like to join in and widen our network. A Photographic Workshop has been planned for Saturday 15th October in the crèche at Enfield Community Centre. There will be 2 two hour sessions held to facilitate members' participation. Being run by Ron Parish, they promise to be informative and interesting as well as professional. It should be a friendly and great learning day. Write your name on the list at the next meetings. Our Socializing with Sarcs Night has been planned for Saturday 5th November with Kevin Hipkins as guest speaker and priced at \$22 per head for the meal. Please see the Treasurer at the next meeting to book your spot for this fun night starting at 6pm. Please consider volunteering for Committee positions that remain vacant. **WE NEED YOU TO HELP** us continue to provide quality membership to our OCSA fellows. It has become very difficult to operate without a Secretary, though we cover however we can with the hard working, existing committee members. It will soon again be time for nominations, **PLEASE HELP** if you can. Thanks to Tony Bourne for his presentation about Fertilizing Orchids at the August meeting. A very practical insight into mixes of chemicals and numbers was shared and discussed by this very experienced grower. His assistance in checking solution concentrations was most appreciated. The Bus trip report will be in the next bulletin. A special welcome to the new members who have recently joined, hope you enjoy the friendship with the flowers. Sunshine on all your September days will make the Sarcs develop so keep bloomin' smiling. Cheerio to all members who aren't well. Healing wishes to you so you can come and join us soon.

*Edda Viskic*

## SUPPORT YOUR CLUB SPONSORS



**Major Sponsor of OCSA's Spring Show**  
**The Royal Adelaide Show is held September 2<sup>nd</sup> – 10<sup>th</sup> 2011**

**weathersafe™ shades**

**20 Bennet Avenue, Melrose Park**

**Ph: 8276 1111**

**website: [www.weathersafe.com.au](http://www.weathersafe.com.au)**

**Your Supplier of Shadecloth, Shade Sails and Fixtures**

## COMING EVENTS

### BUNNING'S BARBECUE – WOODVILLE:

4<sup>th</sup> September from 8.00am to 5.00pm. We know that it's Father's Day and also that the Royal Show is on so a lot of our hard working members will be at the Show so we need your **HELP**. We require per session around 5 persons to man the barbecue. The club will be supplying everything required for the event. We need two people to cook, two people to serve and one to collect the money. Aprons, gloves etc are all supplied. It is anticipated that we would sell in excess of a 1000 sausages so you can imagine we would be fairly busy. We would like to have three shifts of around 3 hours per shift. Please don't leave it to a few of us to carry the burden.

**FINDON COMMUNITY CENTRE:** 14th September at 222 Findon Road, Findon. It is a Garden Club with about 40 members and Bunning's people will be talking on bulbs and we will present DVD's on orchids. We require a few members to come along and wave the club flag and to also bring a plant or two, does not need to be a champion, to show the group that they too can grow orchids. The plants will be placed on a bench for the group to view before and after the meeting., Time 1.00pm to 3.30pm

**BOWER COTTAGES:** 21<sup>st</sup> September at Bower Road Cottages, Bower Road, Ethelton. Once again a Garden Club Meeting with around 70 attending and the program is the same as presented to the Findon Group. We will again require your help with a few plants to be benched for viewing. Time 1.00pm to 3.30pm

**PHOTO WORKSHOP:** Saturday 15<sup>th</sup> October in the crèche – 2 sessions 10.00am to 12.00 pm & 1.00pm to 3.00pm. There were around twenty plus members interested on the list. Please indicate your preference on which session so that the group can be divided.

-ooo0ooo-

### WINTER SHOW – The Treasurer's Perspective

What a great show it was! The Club's coffers were rewarded greatly; actually by more than 600% over last year. It was just a buzz to see the people stream in both on the Saturday and the Sunday. The numbers on the Saturday were almost three times higher this year than they were last year. And to top it off, the numbers through the door on the Sunday were in excess of double those through the door last year. This vast increase in visitors had a snowballing effect throughout the show for the raffle, the kitchen and most amazingly, the trading table. Throughout the weekend, in between my collecting and counting money, it was gratifying to see the number of both members and visitors chatting and enjoying themselves when looking at the plants or enjoying a "cuppa". The whole weekend was just a great success; no doubt the weather played an important part; however it wasn't brilliant on the Saturday this year either. However, I believe the word is getting around; and that was reflected in comments received during the weekend; that this show is becoming a "show winner" and what's more, we only need to "man" the show for a weekend, not a whole week as in the past. Thank you to one and all who helped over the weekend to make this year's Winter Show the success it was.

Graham Hein  
Treasurer

## THOUGHTS FROM THE EDITOR



The continuing inclement weather seems to be playing havoc with our normal flowering times. Most growers experience flowering certain genera around the same time every year but this year most that are normally out are yet to burst their buds. Well this month is going to be very busy with an added three occasions for the Club to attend and help. The first is the Barbecue at Bunning's Woodville where we certainly need a little help. The money raised from this helps to subsidize those events we put on for the members such as the Workshop, Bus trips and Socializing with Sarcos. where the costs are kept to a minimum and the club funds pick up the excess. The two other occasions we need help is the Bower Road and Findon Community Centre days where we are helping Bunning's. Because of the large numbers attending these meetings I will present videos etc. but we need you the members to bring along a plant or two just to show those present that there is a great range of orchid plants other than Cym so please help us to help Bunning's at these events.

### REGISTRAR'S CHOICE FOR AUGUST

#### **Orchid of Open Division & Registrar's Choice**

#### **The Registrar's Choice and Orchid of Open Division**

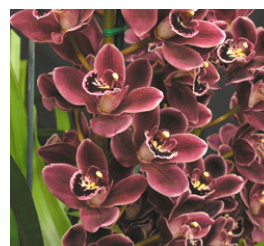
announced by Colin Jennings was *Paphiopedilum* Toni Semple 'Su-Mi' grown by Suzanne Saunders. This majestic orchid is a primary hybrid of two closely related species viz; *Paph.*

*haynaldianum* and *Paph. lowii*. Suzanne's plant displayed 4 flowers and one bud yet to open on an erect stem held well clear of the lush foliage. Colin commented on the size of the largest flower being about 170mm across, very impressive! The flower shape and colours were as one would expect from this hybrid.



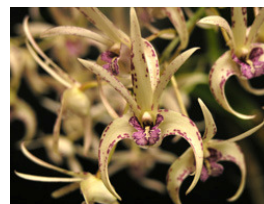
#### **The Orchid of First Division**

was *Cymbidium* Gypsy Rose 'Ashley' grown by Andrew Koch. This attractive pink *Cym.* was registered by Dean Roesler in 2002, the parents being *Cym.* Jessie Blakiston and *Cym.* Rotorua. Colin indicated that *Cym.* Jessie Blakiston was frequently used in producing pink/red cymbidiums and the species *Cym. floribundum* was evident in the hybrid. The flower count per inflorescence varied from 8 to 20 and most were held clear of the foliage.



#### **The Orchid of Second Division**

was an Australian Native hybrid, *Dendrobium* Elegant Autumn x *Den. tetragonum* grown by Trevor and Gwen Camac. This well grown plant presented its cream coloured flowers on long rather pendulous inflorescences a habit probably inherited from the *Den. tetragonum*. The plant was well established in a mixture of bark and marble chips.



Congratulations to the successful growers who presented such high quality orchids. My thanks to all members who brought

their plants to the meeting on a cold winter night?

Ron Yates. Registrar of Judges.

## WHAT CAUGHT THE JUDGES EYE IN JULY



**OPEN DIVISION: Judge:** David Harmer

**PLANT NAME:** *Slc Fire Magic*

**GOWER:** Edda Viskic & Rusell Job

**COMMENTS:** This is what we often refer to as a 'Miniature *Cattleya*' and years ago were judged in the Laeliinae Section as a 'Cocktail *Cattleya*'. The big advantage with growing these is their size and you can have many and varied colours and shapes in plants that do

not take up a lot of room. This plant, a splash petal, 70mm across was hybridised in Hawaii by H. & R. Orchid Nursery a world famous Nursery for producing award winning miniature *Cattleyas*. *Slc. Fire Magic* registered in 2005 is a crossing of *Slc. Tokio Magic* and *Slc. Fire Fantasy* and produces nicely shaped flowers of appealing orange, red and yellow gaining its colours from some seven or so species. Thank you Edda & Russell for bringing in your orchid for all of us to enjoy.



**FIRST DIVISION: Judge:** Colin Jennings

**PLANT NAME:** *Paph. Sheerline 'Rondo'*

**GROWER:** James Argent & Allan Jeffries

**COMMENTS:** *Paphiopedilum Sheerline 'Rondo'* first appeared in collections in Adelaide about the mid to late 1960s. It was at the time one of the best 'yellow' *Paphiopedilums* and much sought after by growers of the genus. According to the RHS colour chart it is referred to as yellow-green! I can recall also that the price per

division was relatively high. This hybrid was registered by Rattcliffe's of England in 1962; at the time one of the largest and most respected breeders of 'standard *Paphiopedilums*'. The parents used were *Paph. Bradford* crossed with *Paph. Lemon Hart*, the latter being one of Rattcliffe's previous registrations from around 1956. Features of this particular cultivar 'Rondo' are its relatively large flowers, well-shaped dorsal sepal and rounded segments as well as the pleasing colour combination. The plant on display at the August meeting, shown by James Argent, was well presented on a strong, erect stem, with the single flower being almost vertical in its presentation. It is always a joy to see these old hybrids, especially those which have the character and charm which made them so famous in their 'hey-day'. *Paphiopedilum Sheerline 'Rondo'* received an HCC in 1976 (AOC Award Number 188) for Peter Crutchley (NSW).



**SECOND DIVISION: Judge:** Reg Shooter

**PLANT NAME:** *L. anceps (Lineata x Ultimo)*

**GROWER:** Trevor & Gwen Camac

**COMMENTS:** *Laelia anceps* is one of the easiest of the *Laelia* genus to grow and flower although it is one of those awkward plants to grow in a pot because it has a creeping rhizome with a

## MEMBERS PLEASE CHECK THIS LIST

**WITH YOUR PLANT LABELS**

**THE FOLLOWING ORCHIDS HAVE BEEN REGISTERED**

<u>Grower</u>	<u>Crossing</u>	<u>Registered Name</u>
70	<i>Doc. (strialata x fuliginosa)</i>	Den. Australian Ginger
1232	<i>Cym. (Sarah Jean x Pendragon)</i>	<i>Cym. Gowling's Gem</i>
118	<i>Den. [(bigibbum x Ellen) x tetragonum]</i>	<i>Den. (Elegant Autum x tetragonum)</i>

**PLEASE CHANGE YOUR LABELS TO THE REGISTERED and or NAME**

**CHANGE, thank you.**

-ooo0ooo-

## WINTER NATIVES AT MYLOR

Walking trails through the Mylor Parklands Conservation Park in early August were rich in clusters and varieties of Terrestrial Greenhood orchids. The Genus *Pterostylis* will be used in this report. Though name changes have occurred recently. The sunshine and 20 degrees enabled me to brush off some of winter's woes and get out orchid spotting. The dainty *Ptst. nana* was first sited low to the ground in the sandy soil. Colonies of ten species sprinkled amid the leaf litter of the woodland understorey. *Ptst. pedunculata* was the next clump to be spotted, slender and straight stemmed, the maroon edged horns on the flowers were very elegant. The nodding heads of *Ptst. nutans* scattered into the grassy verge of the bush and beyond. The stained glass window effect of the flowers is enticing to pollinators. The fresh green blooms of *Ptst. curta* were hiding in mossy spots near Maidenhair ferns. The surprise find was *Ptst. sanguinea*, a tall multi-flowered stem with up to eight blooms on each. They were not as numerous as the other greenhoods, only occurring in one location. Tiny gnat orchids, *Acianthus* sp. are difficult to see, but once you get your eye in you can catch this little mosquito mimic perched on its heart shaped leaf. Flowers were noticed beginning to emerge through the centre's of the hairy leaved Spider Orchids that flower in Spring. The shiny green leaves of the *Diuris* orchids, 'Donkeys' were also evident. The Sun orchids, *Thelymitra* were sending up leaves and flowers. The huge circular leaves of *Lyperanthus nigricans* made a neat patchwork clump but showed no signs of flowering. They usually wait for a bushfire to flower. So they can wait. The fragrance of the yellow wattles flowering along the way as well as the endemic Hakeas, Banksias and Grevilleas made the air intoxicatingly sweet. A shower sprinkled down to lower the temperature so it was a spring delight to ramble around the croaky creek and the tall white gum trees.

*Edda Viskic*

-ooo0ooo-

**A woman who had just given birth to triplets was explaining to a blond friend that triplets happened just once in 15,000 times. "Good heavens!" explained the friend. "When did you ever find the time to do housework?"**

<b>Cymbidium - 60 - 90 mm Yellow/Green</b>		
1st	<i>Cym.</i> (Sarah Jean x Pendragon)	Andrew Koch
<b>Cymbidium - less than 60mm - Any Other Colour</b>		
1st	<i>Cym.</i> (Mini Dream x Volcano)	Graham Hein
<b>Cymbidium - less than 60mm Red/Pink/Brown</b>		
1st	<i>Cym.</i> Gypsy Rose 'Ashley'	Andrew Koch
<b>Cymbidium - less than 60mm White/Cream</b>		
1st	<i>Cym.</i> My Sweet 'Amy'	Andrew Koch
<b>Cymbidium - over 90mm Red/Pink/Brown</b>		
1st	<i>Cym.</i> Beauty Cloud 'Belinda'	Rito & Rosetta Silvestri
2nd	<i>Cym.</i> <i>tracyanum</i> Hybrid	Wendy Lodge
<b>Cymbidium - over 90mm Yellow/Green</b>		
1st	<i>Cym.</i> Baltic Glacier 'Mint Ice'	Graham Hein
2nd	<i>Cym.</i> Baltic Glacier 'Mint Ice'	John Moon
3rd	<i>Cym.</i> Baltic Glacier 'Mint Ice'	Rito & Rosetta Silvestri
<b>Laeliinae - Non-Std. Hybrid 60mm to 100mm</b>		
1st	<i>Bc.</i> Mari's Glory	Wendy Lodge
<b>Laeliinae - Species</b>		
1st	<i>L. anceps</i> ('Veitchiana' x 'Alba')	Graham Hein
2nd	<i>L. anceps</i> 'Oaxaqueana'	Wendy Lodge
<b>Orchid Seedling (Any Genera)</b>		
1st	<i>Cym.</i> (Janis Lin x Solana Beach)	Andrew Koch
<b>Paphiopedilum - Standard Shape Hybrid</b>		
1st	<i>Paph.</i> Sheerline 'Rondo'	Allan Jeffries & James Argent
<b>Zygopetalum - Hybrid Inter-generic</b>		
1st	<i>Zga.</i> Kuitpo 'Brooklyn Park'	Graham Hein
2nd	<i>Z.</i> (Artur Elle x Grand Mac) x <i>Hmwsa.</i>	Wendy Lodge
	Aussie Quest	
	<b><u>SECOND DIVISION</u></b>	
<b>Australian Native Epiphyte - Hybrid</b>		
1st	<i>Den.</i> [( <i>bigibbum</i> x Ellen) x <i>tetragonum</i> ]	Trevor & Gwen Camac
2nd	<i>Den.</i> Jannine Banks	Hendrik & Beatrice Haavisto
3rd	<i>Den.</i> (Graham Hewitt x John Upton)	Shirley Pursche
<b>Australian Native Epiphyte - Species</b>		
1st	<i>Den.</i> <i>aemulum</i>	Kris Kopicki
<b>Cymbidium - over 90mm - Any Other Colour</b>		
1st	<i>Cym.</i> Valley Freestyle 'No.3'	Trevor & Gwen Camac
<b>Cymbidium - over 90mm Red/Pink/Brown</b>		
1st	<i>Cym.</i> Kirby Lesh 'Lonsdale'	Christopher & Dorothy Moncrieff
<b>Laeliinae - Species</b>		
1st	<i>L. anceps</i> ('Lineata' x 'Ultimo')	Trevor & Gwen Camac
<b>Laeliinae - Standard Hybrid over 100mm</b>		
1st	<i>Bc.</i> Mount Hood 'Downs'	Trevor & Gwen Camac
<b>Paphiopedilum - Species</b>		
1st	<i>Paph.</i> <i>insigne</i>	Kris Kopicki

gap of 4 or 5cm between the pseudobulbs which makes it more suitable for mounting on an appropriate mount. It is a very variable species and the one benched at the meeting was a crossing of two varieties. The flowers were not very large or fully opening for the species but were carried on extremely tall spikes. There were two spikes, one was 1m tall carrying 3 typical purple/magenta flowers the second was 80cms tall also with 3 flowers. This is a good species to grow as it flowers regularly in mid-winter. Thanks Trevor & Gwen for bringing in your plant for us to appreciate.

-ooo0ooo-

### **DAY GROUP SPEAKER FOR SEPTEMBER**

Our next meeting will be held at the Enfield Community Centre, 540 Regency Road, Enfield on Friday 9<sup>th</sup> September from 2.00 to 4.00pm. David Harmer will have some assorted videos and presentations to show us which I am sure you will all enjoy. Please come along and join in a fun and relaxing Day. There will be no Beginner's Group on this day as most personnel will be working at the Royal Show.

### **AUGUST DAY GROUP REPORT**

45 members and guests were thoroughly enthralled with the presentation given by Melanie Trimper on her subject of David Austin Roses. Melanie & Kelvin recently joined our Club so prior to Melanie's talk our President Edda Viskic presented Melanie with their Presentation Pack and wished them many happy days with our Club. Melanie showed some amazing images of beautiful roses together with growing information. Melanie pointed out that David Austin is known world-wide for his rose breeding and although he is now 83 years old he is still very active in his nursery. After Melanie's talk she offered the Day Group Members an invitation to visit their Rose Garden in October. Members were really delighted at the invitation. Many questions were asked and expertly answered after which Melanie presented a special calendar which she and Kelvin produced to the best question; Alan Stewart was the lucky recipient.

Reg Shooter gave his usual expert commentary on the many varied and stunning plants. It was lovely to see the beautiful *Paphiopedilums* and the very colourful Australian Natives among the other interesting plants. Thank you to Ron Yates who expertly chaired the Beginner's Group with expert advice on *Oncidium*s.

The many door prizes were greatly appreciated, many thanks to everyone who brought items in for this part of our day. Trevor Camac gave out all the information for the Royal Show and up and coming events. The meeting closed and everyone enjoyed a cuppa and some fellowship while viewing the orchids presented.

*Pat Harmer*

*Day Group Co-ordinator*

-ooo0ooo-

### **SINGAPORE WORLD ORCHID CONFERENCE**

Any Members interested in going to the Conference on 13<sup>th</sup> to 20<sup>th</sup> November 2011 are invited to contact Colin Jennings who has made arrangements through Flight Centre for fares and accommodation in Singapore at reasonable rates. You can contact Colin by phone on (08) 8264 6490 or email [cje97694@bigpond.net.au](mailto:cje97694@bigpond.net.au) for further details.

## CULTURAL OBSERVATIONS FOR SEPTEMBER



I hope all your efforts during the past few months have been rewarding to you with many beautiful flowers ready for the remaining Shows. Most of our Genera have now flowered and I think this year you need to be congratulated on the presentation of your orchids. The quality of all plants benched and presented at our shows are a credit to you the growers. I am proud to say that when viewing plants interstate at meetings and shows our South Australian growers excel with the cleanliness and presentation of the flowers. The recent cold weather has certainly slowed down growth with many plants about a month behind their usual flowering date. Keeping up with the lettuce leaves and cottonwool barriers has kept the slugs and snails down to a minimum.

As the weather warms up you will notice the arrival of those white cabbage moths flitting around the garden so you will need to keep an eye out for those small green caterpillars that can cause a lot of damage to new leads and leaves. Look under the leaves as they are almost the same colour as a leaf and operate from the underside to avoid predators. Scale is still about as it produces in cycles so keep up with cleaning away old bulb husks and check around the rhizome area for this pest. Pest Oil™, Echo Oil™ or similar are safe products to use. Do not forget that when cutting off the old flowers from those plants that have finished flowering to treat the flower stems with Steri-prune™ or a fungicide such as Mancozeb™ made into a paste or you can dust with sulphur dust. Any of these products will prevent rotting of the old flower stem and maybe the loss of the pseudobulb. Don't forget to use a clean sterilized cutting tool for each cut. The watering with the Molasses mix of all plants prior to putting those plants into shows will aid in keeping them in good health. Another watering after the show also helps to provide those sugars to the plant to aid in its continuing healthy condition. Keep up the 'flower booster' fertilizing on all of your budding plants as required. Any real early orchids that have progressed with new root activity the high nitrogen fertilizing can now be started. The cool conditions have aided in the growth of *Sarcophilus* and most plants are looking great for this time of the year. A spray with Envy™ will assist with dehydration as the hotter weather approaches. Those early *Zygopetalums* can now be re-potted if needed and also any of the earlier *Cattleyas* as all are now just showing new root activity. If you have 'soft cane' *Dendrobiums* continue to turn them every few days to ripen the flower buds. We have placed one out the front facing north against a palm tree and the flowering buds are ripening greatly. Australian Natives are budding up and flowering and some staking is required to keep them tidy. Snail Pellets on top will help keep those slugs away from causing any damage. We hope all your hard work during the year will reward you with a great spring flowering season

### HOW THE BEST WERE GROWN IN JULY



**OPEN DIVISION:** The orchid selected as Orchid of Open Division was *Paph. Toni Semple 'Su-Me'* a very eye catching plant grown by Suzanne Saunders. It is a primary hybrid *Paph. (haynaldianum x lowii)* and is grown in a heated house. Suzanne says with regard to watering the plant is grown in a cut down green Sprite Lemonade bottle with holes part way up from the bottom for drainage thus effectively being a 'Water Well'. It is watered with rainwater

### **Laeliinae - Standard Hybrid over 100mm**

1st *Lc. Drumbeat x Blc. Lucky Strike* Iain & Ros Kilpatrick

### **Oncidiinae - Hybrid with Odontoglossum**

1st *Wils. Stirling Tiger 'Floricultura'* Gordon & Coralie Hime

### **Oncidiinae - Oncidium Hybrid**

1st *Onc. Twinkle 'Fragrant Fantasy'* Steve Howard

2nd *Onc. Twinkle* John & Bev Gay

### **Orchid Seedling (Any Genera)**

1st *Cym. (President Gorbachev x Khan Flame)* Nesbitts Orchids

### **Other Genera - Species not listed elsewhere**

1st *Pths. restrepioides* Russell Job & Edda Viskic

2nd *Maxillaria densa* Ron & Irene Parish

3rd *Restrepia sanderiana* Ron & Irene Parish

### **Paphiopedilum - Maudiae Category**

1st *Paph. Maudiae* Russell Job & Edda Viskic

2nd *Paph. Maudiae 'Coloratum'* Nesbitts Orchids

### **Paphiopedilum - Non Standard Shape Hybrid**

1st *Paph. Toni Semple 'Su-Mi'* Suzanne Saunders

### **Paphiopedilum - Species**

1st *Paph. venustum* Nesbitts Orchids

2nd *Paph. insigne 'Harefield Hall'* Malcolm Guy

### **Paphiopedilum - Standard Shape Hybrid**

1st *Paph. Anita 'Compactum'* Nesbitts Orchids

2nd *Paph. Bulldog* Suzanne Saunders

### **Phalaenopsis/Dor. - Standard Shape Hybrid Under 80mm**

1st *Phal. Ever Spring Sunlight 'Andy 9'* Suzanne Saunders

### **Vandaeae - Standard Shape Hybrid**

1st *Vasco. Crownfox Red Gems* Russell Job & Edda Viskic

2nd *Vasco. South East Pearl* Russell Job & Edda Viskic

### **Vandaeae - Non-Standard Shape Hybrid**

1st *Sartylis Braveheart* Russell Job & Edda Viskic

### **Zygopetalum - Hybrid Inter-generic**

2nd *Zba. Elfin Jade x Zga. Kuitpo* Russell Job & Edda Viskic

3rd *Zga. Kuitpo 'Hancock'* Iain & Ros Kilpatrick

## FIRST DIVISION

### **Australian Native Epiphyte - Hybrid**

1st *Den. Victorian Bride 'Genisis'* Rito & Rosetta Silvestri

2nd *Den. Ellen 'Pirie'* Allan Jeffries & James Argent

3rd *Den. (kingianum x Aussie ?)* Wendy Lodge

### **Australian Native Terrestrial - Species**

1st *Ptst. curta* Rito & Rosetta Silvestri

### **Cymbidium - 60 - 90 mm Red/Pink/Brown**

1st *Cym. Willunga Regal 'Purple Pageant'* Allan Jeffries & James Argent

2nd *Cym. (Janis Lin x Solana Beach)* Andrew Koch

3rd *Cym. Sleeping Dragon 'Delicate'* Wendy Lodge

## AUGUST MONTHLY FLORAL RESULTS

### ORCHID OF OPEN DIVISION & ORCHID OF THE NIGHT

*Paph.* Toni Semple 'Su – Me' Suzanne Saunders

### ORCHID OF FIRST DIVISION

*Cym.* Gypsy Rose 'Ashley' Andrew Koch

### ORCHID OF SECOND DIVISION

*Den.* (Elegant Autumn x *tetragonum*) Trevor & Gwen Camac

### SEEDLING OF THE NIGHT

*Cym.* (Janis Lin x Solana Beach) Andrew Koch

### OPEN DIVISION

#### Australian Native Epiphyte - Hybrid

1st	<i>Den.</i> Avril's Gold 'Lou Anne'	Ron & Irene Parish
2nd	<i>Den.</i> Avril's Gold	Reg & Gill Shooter
3rd	<i>Den.</i> Aussie Starlight	John & Bev Gay

#### Australian Native Epiphyte - Species

1st	<i>Doc.</i> <i>teretifolia</i>	Nesbitts Orchids
-----	--------------------------------	------------------

#### Australian Native Terrestrial - Hybrid

1st	<i>Ptst.</i> Dusky Duke	Les Burgess
2nd	<i>Ptst.</i> Hoodwink	Nesbitts Orchids

#### Australian Native Terrestrial - Species

1st	<i>Corybus</i> <i>dilatatus</i> 'Para Wirra'	Malcolm Guy
2nd	<i>Cyrtostylis</i> <i>robusta</i>	Les Burgess
3rd	<i>Ptst.</i> <i>curta</i> 'Lake Paramatta'	Malcolm Guy

#### Cymbidium - 60 - 90 mm Red/Pink/Brown

1st	<i>Cym.</i> Without Peer 'Soft Touch'	Iain & Ros Kilpatrick
-----	---------------------------------------	-----------------------

#### Cymbidium - 60 - 90 mm Yellow/Green

1st	<i>Cym.</i> Margaret Thatcher 'Diplomat'	Elmore & Pam Leske
-----	--	--------------------

#### Cymbidium - over 90mm Red/Pink/Brown

1st	<i>Cym.</i> Valley Chestnut '105'	Malcolm Guy
2nd	<i>Cym.</i> (President Gorbechev x Khan Flame)	Nesbitts Orchids

#### Cymbidium - Species over 100 mm

1st	<i>Cym.</i> <i>hookerianum</i>	Ron & Irene Parish
-----	--------------------------------	--------------------

#### Dendrobium - Hybrid - Other than Aust. Native

1st	<i>Doc.</i> ( <i>striolata</i> x <i>fuliginosa</i> )	Russell Job & Edda Viskic
-----	--	---------------------------

#### Laeliinae - Species

1st	<i>L.</i> <i>anceps</i> 'Oaxaquena'	Gordon & Coralie Hime
-----	-------------------------------------	-----------------------

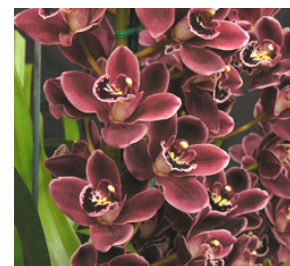
#### Laeliinae - Standard Hybrid 60mm to 100mm

1st	<i>Slc.</i> Jillian Lee 'Bette'	Steve Howard
2nd	<i>Slc.</i> Fire Magic	Russell Job & Edda Viskic
3rd	<i>Slc.</i> Fire Magic	Russell Job & Edda Viskic

only. The plant is only fertilised during the re-potting process when blood and bone is added to the mix. The potting medium is a mixture of small and medium bark with additives of marble chips and perlite.

Susan said that it flowers and grows easily.

-ooo0ooo-



**FIRST DIVISION:** The plant judged as the best in First Division was *Cym.* Gypsy Rose 'Ashley' grown by Andrew Koch. This cool growing orchid is a hybrid between *Cym.* (Jessie Blackiston x Rotorua). Andrew waters the plant daily in the summer months and when required depending on the weather in the winter. It is fertilized weekly with a variety of Manutec™ fertilizers and is potted in Bark, Coco Peat, marble chips and shell grit. The plant is watered with rainwater only.

-ooo0ooo-



**SECOND DIVISION:** Orchid of Second Division was The Australian Native Epiphyte Hybrid *Den.* [(*bigibbum* x *Ellen*) x *tetragonum*] grown by Trevor & Gwen Camac. A Cool growing orchid that is watered with rain water only. It is fertilized monthly with iron Chelates and Epsom salts included in the solution. The plant is potted in medium pine bark with marble chips in the mix. Is grown in a semi enclosed shade house with plenty of ventilation and an evaporative cooler is used as required on warmer days over summer to maintain humidity.

-ooo0ooo-

### 2011 SPRING SHOW INFORMATION

The 2011 OCSA Spring Show will be held in the Goyder Pavilion of the RA&HS from Friday 2<sup>nd</sup> to 10<sup>th</sup> of September.

**SET UP:** Exhibitors may inspect the area on the Tuesday 30<sup>th</sup> of August to check their requirements for displays and to place in their greenery. (9.00am – 5.00pm)

**PUT IN:** All plants and flowers are to be assembled on the Wednesday 31<sup>st</sup> of August (8.00am - 4.00pm) All displays must be completed by the closing time of the Goyder Pavilion. For Access to Goyder Pavilion: Park in Rose Terrace car park – (head for eastern car park area.)

**PLANTS for COMPOSITE:** These will be accepted in your division area, and set aside until 4.00pm on Wednesday 31<sup>st</sup> August to allow enough staging time before the hall is closed, make sure you are not too late to express your artistic flair!

**Plants will not be received after 4.00pm.** There is no limit to the number of plants that you can enter, but you must fill out and lodge a Nomination Form for those plants that you wish the judges to evaluate.

**SHOW DISPLAYS:** As the available area for display is always in high demand and restricted at this venue, Those members who intend to exhibit as joint exhibitors and/or other clubs who may wish to place an exhibit in the Spring Show must notify the Show

Marshal Trevor Camac (8396 4414) of their requirements allowing sufficient time for the manufacture of suitable exhibitor name labels. You will need to discuss your allocated display area with the Show Marshal on 'Put in Day'. All displays must have the prior approval of the Show Marshal. No plants in flower other than orchids may be exhibited, and the use of artificial foliage and lawn etc. is not permitted.

**FERNS and FOLIAGE:** Please bring in any ferns and foliage that you can spare, as it takes quite a few of these to fill in between the orchids and assists in making attractive displays. If you have spare plants please bring these to Goyder Pavilion with your pots marked with your name or 'Exhibitors Number'.

**PLANT LABELS:** Make sure that you have your correct coloured Division Label together with your Exhibitor's Number on your plants. Additional labels are available from the Trading Table, Show Marshal and Registrar of Judges.

Nomination Forms and Show schedules will be available on Put in Day, Wed. 31<sup>st</sup> August.

**All nominations must be submitted by 4:00pm Wed. 31<sup>st</sup> August.**

**JUDGING:** Judging of nominated plants will take place on Thursday 1<sup>st</sup> Sept.

Judges are required by 8.00am on Thursday 1<sup>st</sup> September for an 8.30am start.

**AOC Award Judging:** If you have a plant for an AOC award then this can be arranged by phoning Roger Rankin on 8182 2702 at least 48 hours before the commencement of show judging.

**OCSA Award:** This can be arranged by notifying Ron Yates 48 hours before put in on the 31<sup>st</sup> August.

**SHOW HELPERS:** Those members that can help with Security and assist the public with information should enter their names on the Roster Sheet or contact Trevor Camac on 8396 4414. (These helpers will receive free entry tickets to the Show Grounds)

**OFFICIAL SHOW OPENING and SHOW PREVIEW:-**This will be held on Thurs 1<sup>st</sup> of September in the Goyder Pavilion Southern Mezzanine. Access to the Goyder Pavilion southern mezzanine will only be via the northern door from 6.45pm. Free parking is available in the Rose Terrace Car Park. (Members are required to wear name tags for Security reasons). Members & friends are invited to attend this Official Opening and Preview of the Spring Show and **Must be seated by 7.00 pm sharp.** The Official Opening and Presentation of the Championship Ribbons and Trophies will begin at 7.15pm.

Members attending the opening night will be able to preview the Orchid show from 8.00pm until 8:45pm when the pavilion will be closed. Members attending the opening night are reminded that there may also be two private functions occurring within the Goyder Pavilion at the same time and that members will not have permission to access or enter any other area within the Goyder Pavilion.

**SHOW TAKE-OUT:** On Sunday 11<sup>th</sup> of September between 8.00am and 10.00am. All plants and foliage plants must be removed from the venue during this time unless some special arrangements are made with the Show Marshal beforehand.

### **SPRING SHOW TRADING TABLE**

The orchid club will hold its Trading Stall in the Goyder Pavilion along the northern side wall during the Royal Show. Members wishing to sell their surplus plants (no limit applies) through the stall should deliver their plants to the north-western end of the Goyder Pavilion. Receiving of all sale plants will only be on Saturday 27<sup>th</sup> of August between the

C. Memoria Robert Nerks 'William' after your uncle. The rest are just the registered crossing name.

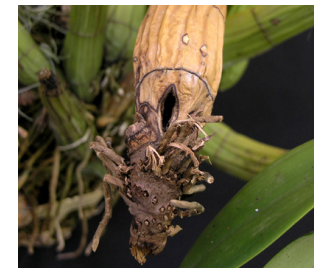
You now have three of the best clones with varietal names and when dividing, hybridizing or selling the plants you know which are the best.

David & Pat Harmer

-ooo0ooo-

### **Schomburgkia tibicinis**

Now known as *Myrmecophilia* (Mcp.) there are about 15 to 17 species of this genus in the Laeliinae section and are found in Costa Rica, Guatemala, Honduras, Mexico and Venezuela. They grow in nature on the lowland slopes facing the Caribbean Sea and the Gulf of Mexico. A lot of these plants are often sold as *Laelias* and there are two types found in nature; one type having hollow pseudobulbs and the other is solid in form. The Genus was named after Sir Richard Schomburg who with his brother a collector



located these plants in the Tropical Americas. In 1865 Sir Richard became the director of the Adelaide Botanic Gardens. Often this plant is known as the Cow's Horn Orchid or Trumpet Orchid. The hollow bulb types are unique and form a natural orifice at the base of the bulb in front of the rhizome and in between the new growth eyes. The local kids of Honduras cut holes of various sizes along the bulb and play them like a trumpet or flute. Nature has designed these hollow bulbs so that 'Fire Ants' can nest and make a home in the hollow of the bulbs and when the plant is in flower they swarm up the bulb and attack any undesirable pollinator of the flowers but allow the favoured pollinator access to the pollen.

The inflorescence arises from the top of the pseudobulb and can reach up to 600mm in length and carries up to 40 attractive well spaced flowers up to 80mm across which open in succession over several weeks. The pseudobulbs are about 350mm long, conical, grooved and hollow in this particular species. In Adelaide we grow this species on a cork slab out with the *Cymbidiums* and it is watered when it rains or when the overhead sprinklers are activated. It gets a little fertilizer now and again with the Cyms but more often is overlooked. They grow quite well under our conditions and readily adapt to a minimum around 5°C and a maximum of 38°C but would be better suited under cover during our winter months to control watering. Most years due to our lack of observation the slugs chew off the new flower raceme as it emerges from the apex of the bulb together with the odd new lead. They like bright light hanging up and good air movement. A different and rewarding species to grow and flower.



David & Pat Harmer

good light under the 70% cream shade cloth and of course excellent air movement. Wet bark and baby tears on the floor produce good humidity around the plant. It is fertilized every week during the growth period with Horticultural Solutions Native fertilizer at half strength. When the overhead sprinklers operate to water and cool the *Cymbidiums* the mounted plants are flushed several times a week during the summer months. Another "gem" to add to your collection.

-ooo0ooo-

## **SOUTH AUSTRALIAN ORCHID HISTORY**

### **Native Orchid Society of South Australia**

The Society was formed on the 22<sup>nd</sup> March 1977, when 48 interested people attended the inaugural meeting at the Goodwood High School. The meeting was chaired by Mr. Colin Jennings, President of the Orchid Club of South Australia.

It was decided that meetings would be held at the Goodwood High School on the fourth Tuesday of each month. A committee was elected with Mr. L.T. Nesbitt as the first President and Mr. E.R. Hargreaves as the Secretary. The other officers and committee members are all experienced orchidists. A programme of activities of benefit to all orchid growers is in preparation. The aim of the new Society is to promote the culture, propagation, conservation and scientific knowledge of the native orchids of Australia. Already a library has been established. Mrs. Mary Earle, a committee member, is organizing a seed bank for the benefit of members.

At the April meeting, Vice-President Mr. Peter Hornsby, gave a talk and slide programme on the orchids of the Mount Lofty ranges. Plants were displayed and commented on and hints on sowing were given by Mr. Les Nesbitt.

The Native Orchid Society is now the ninth organized group devoted entirely to Australian native orchids.

*Australian Orchid Review*

-ooo0ooo-

### **WHAT IS A VARIETAL NAME?**

This becomes a bit confusing because an actual orchid plant must have a registered name but is not required to have a varietal name on the registration.

A varietal name or cultivar name is an additional name given to a specially selected clone to indicate its superior quality eg. 'Dee-Pee'. We could say for example produce, 100 seedlings from the same *Cattleya* pod all having the same parents. *C.* (Fred x Meg) as an example. It would be wonderful if all of them flowered at the same time on the same day. You would then select the very best flower from the group and register the crossing with the R.H.S. where you would tell them that your cross is *C.* (Fred x Meg) and you would like to name it after your father *C. Memoria Robert Nerks*. You send the paper work away to England with the fee stating the crossing, the name you wish to call it, the hybridizer and a description of the best flower. You will get an acknowledgement from the R.H.S. confirming that your orchid has been registered as *C. Memoria Robert Nerks*. This name now applies to all of the other 99 plants of the same crossing.. On viewing the other flowers you see that several are of better quality than the rest so you decide to add a varietal name to each of the better ones but individually with a different name.

The prize one you registered you decide to call *C. Memoria Robert Nerks 'Mary'* after your mother, the next best *C. Memoria Robert Nerks 'Leanne'* after your sister and a third

hours of 9.00am and 1.00pm. Please make sure the plants are cleaned up, with all dead tips and dry husks on the bulbs removed.

Plants unnamed or labelled unknown (unless in flower) will not be accepted for sale. All divided plants are to be securely tied in clear plastic bags and at least a third of the roots cut off the bottom. All plant labels must have the colour of the flowers, flowering time and size included.

All plants are to be priced by the owner. Please price them realistically. State on your sheet how we can reduce the price of your plants if necessary on the final day. **If you do not want this to happen obtain a red spot on delivery day.** The dot must be attached to the middle of your label next to your price so that it can be clearly seen. Please place the ticket as close to the top of the pot as practical, **not on the leaves!**

Don't forget to write the price on masking tape and place on the best side of the pot.

If you are putting in more than one sheet, mark the docket with consecutive numbers, for example: if you had 10 full sheets your numbers would read 1 to 260.

Please put your Exhibitor's Number on your sales sheets. All labels and sales sheets must be fully and correctly filled in; otherwise your plants may not be accepted for sale.

Please attach a plastic label with the plant name on it to the division. Place colours and sizes in separate carry bags labelled for easier identification. Please do not break your plants into too smaller pieces; single bulb divisions will be rejected.

Please note that potted plants in pots up to 200mm will be given preference, 250mm pots may be rejected

All potted up back bulbs must have a new shoot visible. Un-potted back bulbs will only be accepted if they are in clear plastic bags with each bulb in the bag clearly labelled with the name, habit and colour.

**SHOW HELPERS:** Those members that can help with the trading table should enter their names on the Roster Sheet or contact Murray Baulderstone on 8276 3771.

**Members wishing to sell their surplus plants on the trading table**

Please put your exhibitor's number on all of your sales sheets and plant labels.

### **HOW YOUR SALES SHEET & PLANT LABELS SHOULD LOOK.**

#### **THE ORCHID CLUB OF SOUTH AUSTRALIA INC**

#### **PLANT SALES RECORD**

NAME: C. Smith

EXHIBITOR'S NO: 389

SHEET: 1 of 1

Plant No.	Plant Description	Price \$	Sold	Returned
1	Cym. Crackerjack 'No12'	\$15.00		
2				

#### **EXAMPLE OF PLANT TAGS**

##### **SIDE ONE**

Cym. Cracker Jack 'No.12' (Name)

Intermediate/Brown (Size & Colour)

October (Flowering Time)

##### **SIDE TWO**

389            1            \$15.00  
(Exhibitor No) (Plant No) (Price)

C. Smith (Members name)

All plants are to be priced by the owner, please price them realistically.

All Plant labels and sales sheets must be fully and correctly filled in.

Otherwise your plants may not be accepted for sale.

If you need further information contact the Show Marshal Trevor Camac Ph 8396 4414

### **2011 – Royal Show Details & Access to Goyder Pavillion**

Day	Date	Times	Activity
Sat	27 <sup>th</sup> Aug	9.00am to 1.00pm	Receiving Sale Plants
Tues	30 <sup>th</sup> Aug	9.00am to 5.00pm	Place Greenery & Displays
Wed	31 <sup>st</sup> Aug	8.00am to 9.00pm	Orchid Display Plants by 4.00pm
Thurs	1 <sup>st</sup> Sept	8.00am to 4.00pm	Orchid Judging
Thurs	1 <sup>st</sup> Sept	6.45pm <b>Seated by 7.00pm</b>	Orchid Members to arrive Southern Mezzanine
		7.15pm	Official Opening by Patron Mrs. Scarce Presentation of Sashes & Trophies
		7.45pm	Supper in Mezzanine
		8.00pm to 8.45pm	View Orchids & Vacate Pavilion
Sun	11 <sup>th</sup> Sept	8.00am to 10.00am	Take out Plants

*Richard Fishlock Ex-Officio Horticultural Committee*

-ooo0ooo-

### **PARTICIPATING IN THE SHOW**

If you want to know how to win enemies and lose friends, follow the following tips:

- Book a site and then don't show and don't turn up.
- Don't book a site but then arrive with a lot of plants an hour before the deadline.
- Have your display only half finished by closing time.
- When putting in the Shows Composite area insist that your plants are in the front.
- Tell them you're going away and you want to remove your plants before the Show is over.
- Criticize the way the members and the Show Marshall have put in the displays but don't offer to help
- Put your plant up for an award. When it is not awarded make sure everyone knows that the judges don't know what they are doing.
- Make sure your plant labels are unreadable then people will have to talk to you to find out their names.
- Touch and feel the flowers of other member's plants.
- Tell others you have flowered a plant like theirs but yours was far better.
- Tell other members that their plant is a dog and should not be in the show.
- Tell everyone the show would have been better had you been the Show Marshall but you wouldn't have the job for a million dollars.

Come on members hop in and give a hand. As you know 'Many hands make light work' and it can also be lots of fun.

### **WHAT'S IN A NAME?**

#### ***Cattleya loddigesii* (Pronounced Loe-ij-es-ee-eye)**



*Cattleya loddigesii* is an easily grown, attractive species from Brazil with an interesting history. It was the first *Cattleya* to be flowered in England in the early 1800s by the German born nurseryman Joachim Loddiges 1738-1826 where it was known as *Epidendrum loddigesii*. He had moved to England as a young man of 19 where he started off as a gardener but after a few years opened his own nursery in Hackney London importing plants and seeds from all over the world (he is credited with introducing *Rhubarb* into England). Upon his death his son George inherited the

business and built the largest glasshouse in the world at that time. It had a central heating system enabling him to grow many exotic plants including orchids, this attracted much interest to the general public, and they visited by the hundreds marveling at the 'New Science'. George died in 1846 and the nursery passed to his son Conrad. However the ground surrounding the nursery some 100 years earlier, when Hackney was a small village, with plenty of space was now prime building land for the rapidly growing city of London so after a few short years operating the nursery Conrad sold to the developers (Not much has changed has it?). In 1845 John Bailey who was born in Hackney and trained and worked at Loddiges Hackney nursery arrived in Adelaide where he was appointed to run a 'Botanic Garden'. He subsequently opened his own business known as 'Hackney Nursery' at the junction of Hackney and Magill Rd. The suburb of Hackney in Adelaide was named after his home town in England.

***Reg Shooter***

-ooo0ooo-

#### ***Dockrillia cucumerina***

This epiphytic Australian Native is found mainly on the western slopes of the Great Dividing Range from south eastern Queensland to central eastern N.S.W. It grows predominately on the main branches of the River Oaks or Casuarinas along the banks of streams. It is easily recognized by its gherkin like leaves. We first purchased our plant from Barry's Hardware on the 21<sup>st</sup> January 1987 for \$5.50 and it first flowered in December 1987 as a small plant. It regularly flowered after that at least two to three



times per year in April and again in November and December. Originally it was on a small piece of Casuarina but soon covered it with its rambling growth habit and was transferred to a much larger in area Portugal Bark mount which it is still on to this day. It grows all over the mount up and down and front and back. When shown at a meeting it nearly always gets a prize. The flowers arise on stems from the base of the bulbs, the raceme being up to 60mm long and carry up from two to ten cream/green flowers, 12mm across with brown/red stripes in the centre. Hanging up above the *Cymbidiums* the plant receives